

Borough Comparison Dashboard

Date
Oct 2020

Monthly/Rolling 12 Selection
Rolling 12

Period Compared to
Previous Year

Kingston upon Thames compared to Previous Year against selected boroughs in Oct 2020 (Rolling 12)	Borough Main Kingston upon Thames		Borough Comparator 1 Richmond upon Thames		Borough Comparator 2 Merton		Borough Comparator 3 Wandsworth	
	Volume (Rolling 12)	Percentage (Volume) Change from Previous Year	Volume - (Rolling 12)	Percentage (Volume) Change from Previous Year	Volume - (Rolling 12)	Percentage (Volume) Change from Previous Year	Volume - (Rolling 12)	Percentage (Volume) Change from Previous Year
	ASB	6,429	▲ 79.9% (2,856)	7,402	▲ 97.5% (3,655)	7,373	▲ 71.5% (3,074)	14,459
Burglary in Other Buildings	118	▼ -40.4% (-80)	245	▼ -25.3% (-83)	161	▼ -39.9% (-107)	501	▼ -20.0% (-125)
Burglary in a Dwelling	818	▼ -0.4% (-3)	1,165	▼ -4.8% (-59)	935	▼ -31.8% (-435)	1,852	▼ -13.8% (-296)
Disability Hate Crime	7	▼ -12.5% (-1)	8	▲ 33.3% (2)	17	▲ 70.0% (7)	13	▲ 116.7% (7)
Domestic Abuse Hate Crime	1,527	▲ 5.8% (84)	1,308	▲ 6.4% (79)	1,984	▲ 7.8% (143)	2,600	▲ 1.6% (41)
Faith Hate Crime	26	▼ -18.8% (-6)	17	▼ -37.0% (-10)	21	▼ -27.6% (-8)	41	▼ -46.1% (-35)
Gun Crime	12	0.0% (0)	18	▲ 12.5% (2)	25	▼ -28.6% (-10)	46	▲ 4.5% (2)
Homophobic Hate Crime	26	▼ -35.0% (-14)	49	▲ 40.0% (14)	38	▼ -5.0% (-2)	67	▲ 19.6% (11)
Knife Crime	106	▼ -30.7% (-47)	103	▼ -48.5% (-97)	177	▼ -27.2% (-66)	366	▼ -10.1% (-41)
Knife Crime With Injury	44	▲ 15.8% (6)	29	▼ -23.7% (-9)	53	▼ -24.3% (-17)	88	▼ -28.5% (-35)
Racist and Religious	293	▲ 8.1% (22)	312	▲ 30.0% (72)	327	▲ 6.5% (20)	662	▲ 28.8% (148)
Rape	166	▲ 3.1% (5)	110	▲ 27.9% (24)	101	▼ -17.2% (-21)	234	▲ 0.9% (2)
TNO	11,772	▼ -10.6% (-1,397)	12,587	▼ -2.0% (-263)	13,848	▼ -4.8% (-700)	25,092	▼ -3.8% (-1,004)
Theft Person	379	▼ -30.2% (-164)	147	▼ -42.4% (-108)	223	▼ -19.5% (-54)	558	▼ -22.1% (-158)
Theft Taking of MV	300	▲ 30.4% (70)	433	▼ -15.8% (-81)	515	▲ 1.2% (6)	1,039	▼ -1.9% (-20)
Theft from MV	729	▼ -26.4% (-262)	1,644	▲ 14.6% (209)	1,325	▲ 8.5% (104)	2,347	▼ -4.0% (-97)
Total Burglary	936	▼ -8.1% (-83)	1,410	▼ -9.1% (-142)	1,096	▼ -33.1% (-542)	2,353	▼ -15.2% (-421)
Total Criminal Damage	773	▼ -17.0% (-158)	943	▼ -5.6% (-56)	998	▼ -13.3% (-153)	1,538	▼ -7.3% (-122)
Total Robbery	233	▼ -34.6% (-123)	249	▼ -46.8% (-219)	401	▼ -6.5% (-28)	809	▼ -7.5% (-66)
Total Sexual Offences	421	▲ 8.5% (33)	302	▲ 11.9% (32)	321	▼ -9.1% (-32)	648	▼ -3.7% (-25)
Transgender Hate	7	▲ 75.0% (3)	2	▲ 100.0% (1)	3	▼ -66.7% (-6)	7	▲ 133.3% (4)
VWI	1,083	▼ -11.9% (-146)	892	▼ -0.2% (-2)	1,368	▼ -0.2% (-3)	2,210	▼ -5.7% (-134)
Violence Against the Person	3,476	▼ -1.0% (-36)	3,011	▲ 2.8% (82)	4,183	▲ 7.2% (281)	6,750	▲ 1.1% (75)
Youth Violence	226	▼ -29.8% (-96)	229	▼ -29.1% (-94)	302	▼ -14.2% (-50)	444	▼ -6.7% (-32)

[Click here to return to the Navigational Page](#)

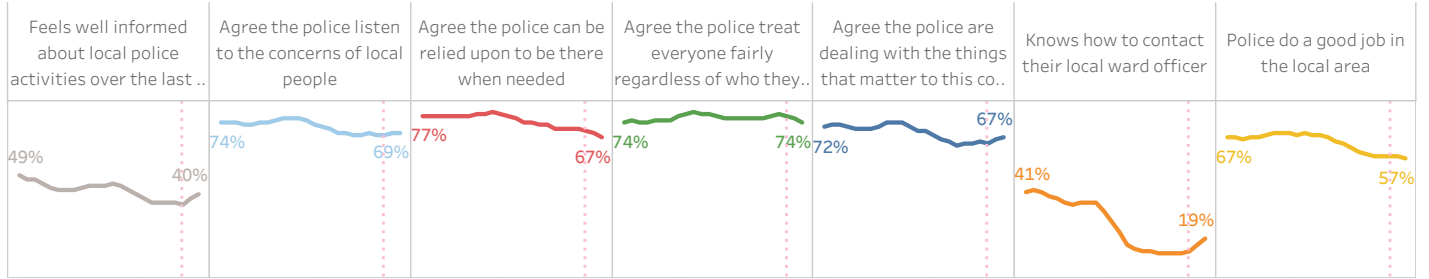
Public perception data

Dashboard instructions

Trends over time

Borough MPS

Public Perceptions over time for **MPS** residents



Dotted line denotes when the interview methodology changed in April 2020

Borough level data

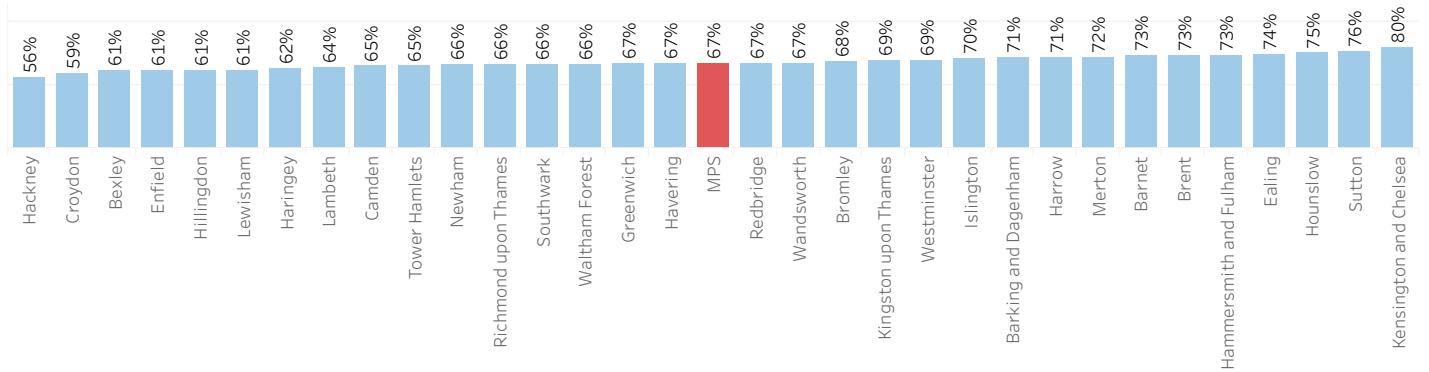
Measure

Agree the police can be relied upon to be there when needed

Date

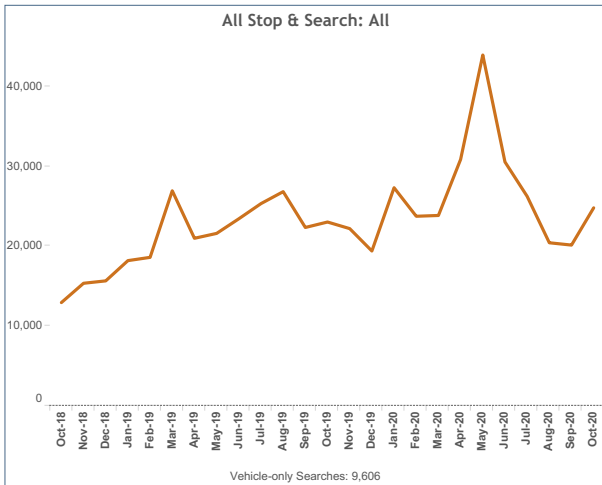
September 2020

Public Perception responses to "Agree the police can be relied upon to be there when needed" by borough (Rolling 12 months to September 2020)

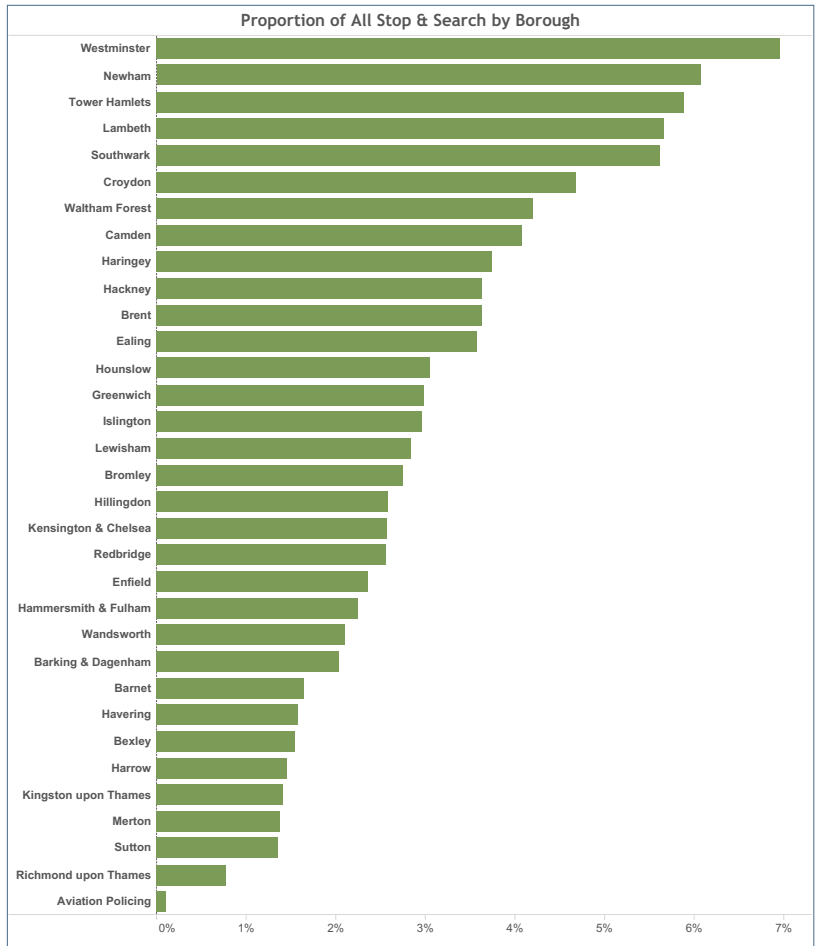
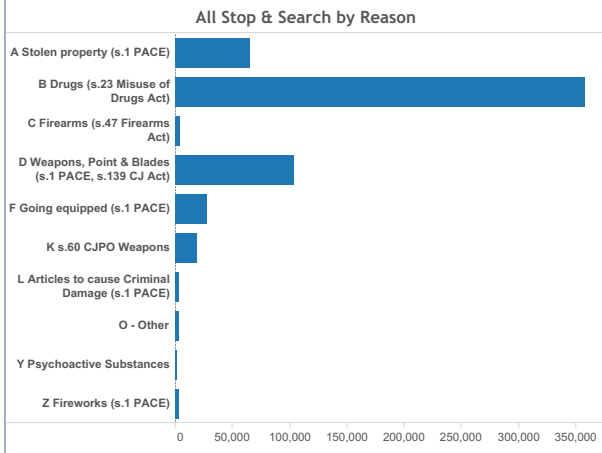


[Home page >>](#)

[Next tab/page >>](#)



Vehicle-only Searches: 9,606



Victim Satisfaction data

Dashboard instructions

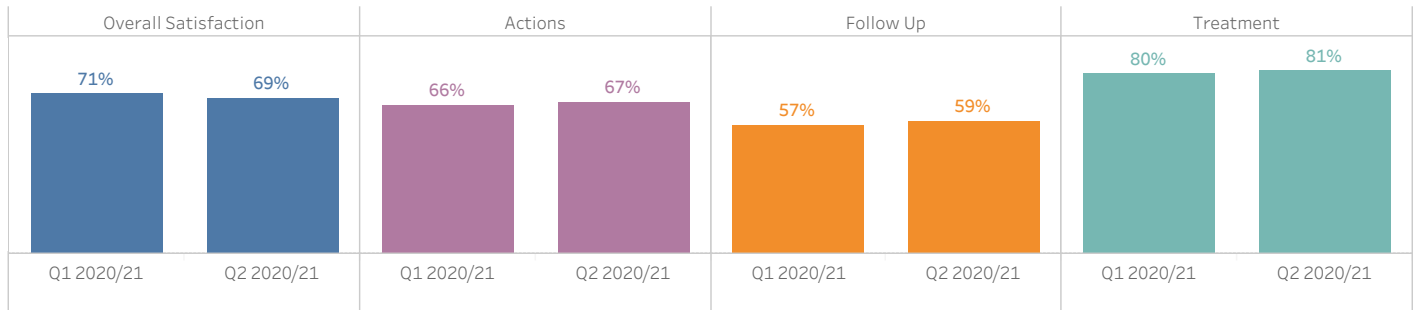
Trends over time (Discrete Quarter Q2 2020/21)

Basic Command Unit
MPS

Crime Group
All

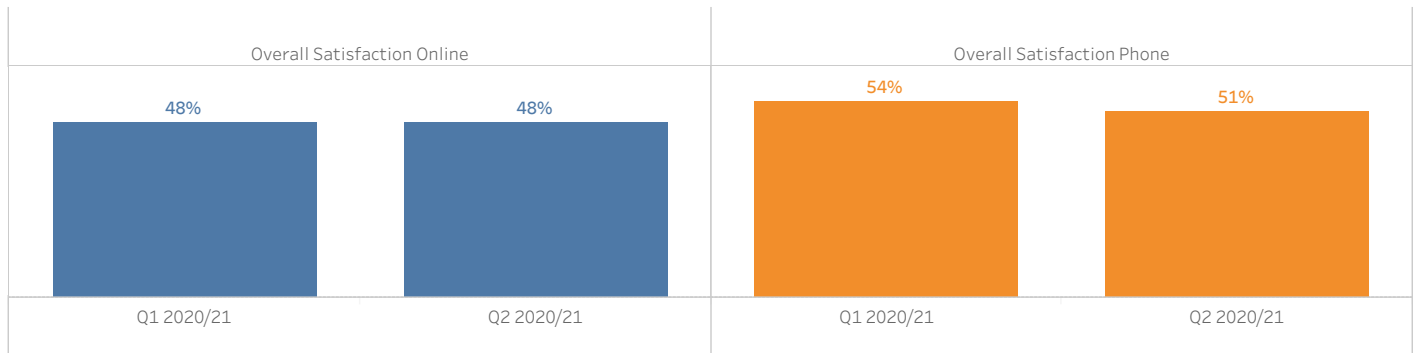
*Note that crime group results are only available at MPS level due to base sizes.

User Satisfaction Survey (USS) Satisfaction for victims of crime from MPS



Crime Group
All

Telephone Digital Investigation Unit (TDIU) Satisfaction for victims of crime - (All)



[Home page >>](#)

[Next tab/page >>](#)